

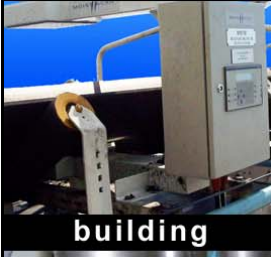
INDUSTRIES



mining



chemicals



building



food



agriculture



bio fuels

MEASURING MOISTURE IN CRUSHED NICKEL ORE

Application Note

Customer

Our customer, located in Canada and is known to be one of the highest grade phosphate mines in the world.

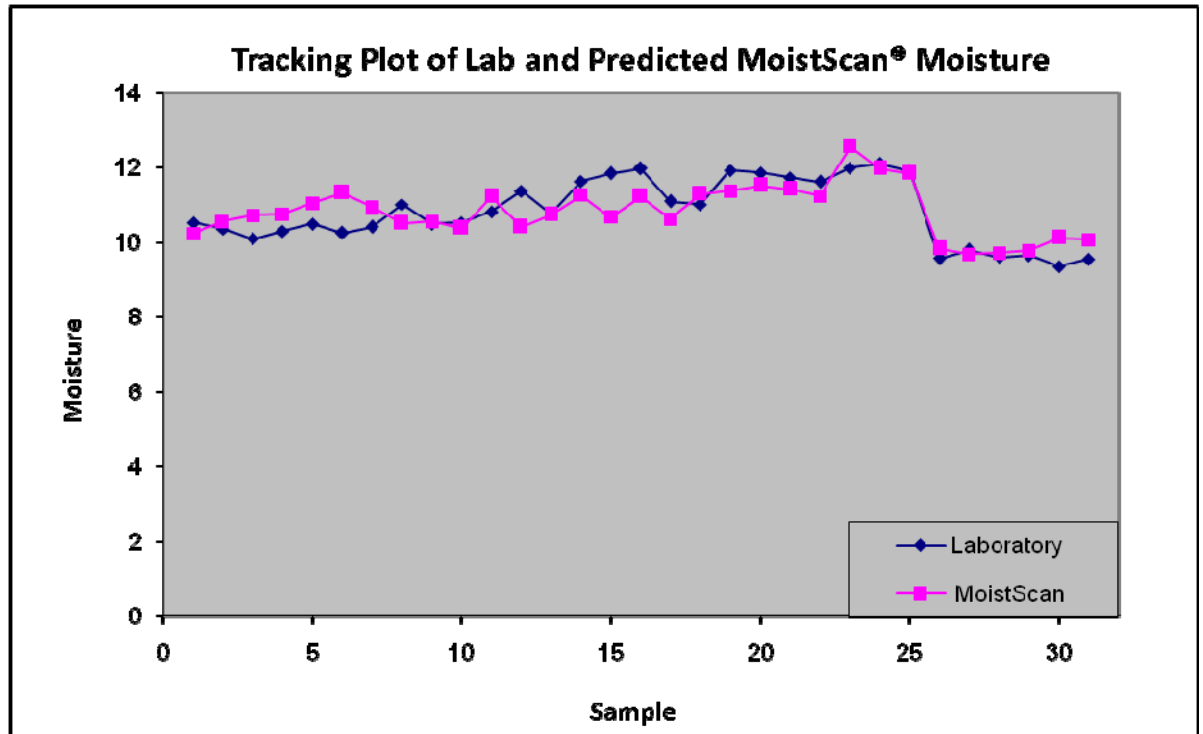
Installation

A MoistScan[®] MA-500HD online microwave moisture analyser is installed immediately after the weigh-feeders at the base of the storage bins and is responsible for measuring the moisture content of crushed ore before it is milled in the rod mills.



Benefit

The MoistScan[®] analyser is used to measure the moisture content of the ore as it is important for accounting purposes, allowing accurate assessment of throughput and yield.



Application Summary

Material	Crushed Nickel Ore
Instrument	MA-500 Series 2
Location	On Conveyor
Bed Depth	N/A
Particle Size	Fines – 20mm

Moisture	1 - 5%
Belt Speed	N/A
Temperature	Room Temperature
Precision	N/A
Use	Moisture monitoring